

Online Portfolio

2025

**LA LUCA<sup>®</sup>**

Bespoke joinery manufacturing

[www.lucawood.ro](http://www.lucawood.ro)



# PURPOSE BEATS PROFIT EVERY TIME

Our purpose is to protect and cultivate heritage through innovative solutions that keep traditions and fundamental values alive, integrating them into a modern, relevant, and sustainable vision for the future. In doing so, we not only define our identity but also actively contribute to shaping a future where tradition and innovation coexist harmoniously, leaving behind a valuable legacy for generations to come.

**LUCA is dedicated to excellence in the restoration of laminated wood joinery for historic buildings and in the production of joinery for new buildings designed in a classic style. Our solutions are premium, not mass-produced, and offer a high degree of customization tailored to each project. We recreate joinery that preserves the soul and story of each building, blending tradition with innovation.**

Together with architects, builders, and industry professionals, we bring the past to life and prepare buildings to withstand the challenges of the future. We position ourselves as trusted partners and guardians of the architectural heritage of every European country where we operate.

---



## COMPANY VALUES

Responsibility  
Sustainability  
We believe in people  
Evolution  
Competence  
Courage  
Discipline

We built a factory with our hands and at the same time we learned to build values without which, we would not have been, able to overcome obstacles.

**From below zero to ZERO ERRORS in laminated wood joinery production** – high execution speed, elimination of downtime, and technological optimization through full automation of production processes. We constantly invest in progress and people dedicated to our vision.



# BESPOKE JOINERY MANUFACTURING

## **LAMINATED WOOD WINDOWS**

no. 1

Each wooden window is designed to harmoniously combine functionality with aesthetics, respecting the architectural identity of each region. The benefit of customization is enhanced by the diversity of profiles we work with, specific to each country and the standards imposed by the architectural style of historical buildings undergoing restoration.

no. 2

## **LAMINATED WOOD DOORS**

Any wooden door produced by LUCA is designed to respect the architectural identity of different regions in Europe while meeting the exact specifications of the client and the space.

no. 3

## **LAMINATED WOOD SHUTTERS**

Shutters are an essential element of European architecture. We manufacture various types of shutters specific to European regions, including shutters specific to Italy, known as Genoese shutters.

# The most important LUCA project is your project

a promise we make to every client, whether in our home country or across Europe. We have worked diligently to ensure that our premium laminated wood windows meet a wide range of needs, providing customized solutions for any wood joinery project.



## Bespoke joinery manufacturing

The first contract in Europe, Italy - Turin, of large dimensions, produced in the LUCA factory. A significant moment in professional development and, at the same time, an assumed challenge, as my motto revolves around a single word: BELIEVE.

The belief that I can, as long as the involvement and dedication are at 100%. This means that I personally know all the details of each wooden carpentry project that goes into production, and I am the one who provides all the technical solutions, because I strive to personally understand all the client's needs regarding laminated wood carpentry.

**Sorin Luca**  
General Manager

# LUCA<sup>®</sup>

Bespoke joinery manufacturing



**LUCA has never just offered the market a product – we have put forth the sacrifice, discipline, and hard work of a team of over 30 people.**

**We have invested emotion, passion, and creative strength to turn a bold vision into reality.**

Our vision goes beyond the boundaries of a company – it is a deep connection with those who choose to become part of our story. We have grown through challenges, faced failures that shook us, but taught us to persevere and become better.

Each LUCA window becomes a bridge between eras, seamlessly integrating into its architectural context. Our projects are treated as a form of art, where technology and craftsmanship blend harmoniously. We understand both the technical details and the unique emotion of each project, making our joinery an essential part of every construction.



Bespoke joinery manufacturing

# WOOD WINDOWS LUCA

## Custom Window Profiles

Our profiles are tailored to the requirements of each European region, meeting both local architectural specifications and modern performance standards.





**Profile: 68 mm thickness x 80 mm width**

**Thermal Value**  $U_w 1.27W/m^2K$  (double-glazed glass  $U_g 1.00$ )

**Gasket** EPDM gasket, standard colors: white, beige, brown, wenge, gray, black

**Hardware** Visible or concealed, supporting up to 80 kg

**Rain Protection Profiles** On the frame and sash as standard wooden equipment, available in different colors

**Available Wood Types** Spruce, Meranti, Nordic Pine, Oak

**Glass** Can be fitted with 24 mm double glazing or 32 mm triple glazing

**Window Opening Type – Specifications and Customization**

Special geometry windows: round, arched

Sliding wooden windows

**Folding windows**


Standard and tilt-and-turn opening windows

It is possible to customize the frame at the bottom by producing it from wood and adding drip edges on the exterior of the sash.

**Can be equipped with 'gueule de loup' interlocking closure system and surface-mounted cremone handle.**







## Thonon-les-Bains, France

A space redefined by the perfection of LUCA joinery details: 68 mm profile windows, adapted to the French style. Customization options for the lower frame include wooden construction and the addition of drip caps on the exterior of the sash





**Profile 78 mm thickness x 80 mm width**

**Thermal value**  $U_w$  0,85 W/m<sup>2</sup>K (trypan glass  $U_g$  0,5)

**Gasket** EPDM gasket, standard colors: white, beige, brown, wenge, gray, black

**Hardware** Visible or hidden to carry up to 150 kg

**Rain protection profiles** On wooden frame and sash as standard equipment, available in different colors

**Available essences** Spruce, Meranti, Nordic Pine, Oak

**Glass** Trypan starting from 36 mm thick glass package

### **Window opening system**

Sliding wooden windows

Windows with special geometrical designs: round, with arch

Windows with folding opening system

Windows with normal opening system and tilting-in mounting





**Profile 92 mm thickness x 80 mm width**

**Thermal value**  $U_w$  0,77 W/m<sup>2</sup>K (trypan glass  $U_g$  0,5)

**Gasket** EPDM gasket, standard colors: white, beige, brown, wenge, gray, black

**Hardware** Visible or hidden to carry up to 150 kg

#### **Rain protection profiles**

Rain protection profiles On wood frame and sash as standard equipment, available in different colors

**Available essences** Spruce, Meranti, Nordic Pine, Oak

**Glass** Ranging from 36 mm trypan glass to 52 mm trypan / tetrapane glass package

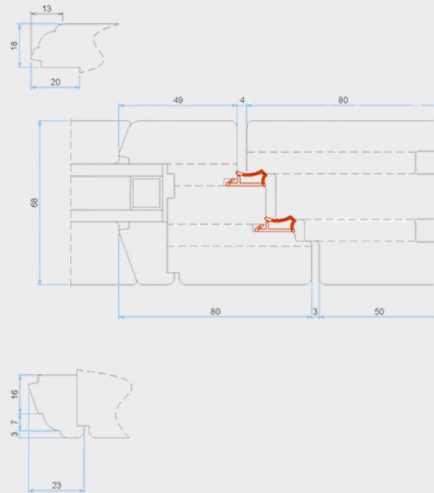
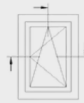
**Destination of use** Passive houses, energy efficient buildings

#### **Window opening system**

Sliding wood windows

Windows with folding opening system

Windows with normal opening system and tilting-in mounting



**Profile: 68 mm thickness x 80 mm width**

**Thermal Value:**  $U_w 1.27W/m^2K$  (double-glazed glass  $U_g 1.00$ )

**Gasket:** EPDM gaskets, standard colors: white, beige, brown, wenge, gray, black

**Hardware:** Classic hinges and decorative surface-mounted cremone handle

**Rain Protection Profiles:** Classic wooden drip edge, applied to the exterior of the sash

**Available Wood Types:** Meranti, Nordic Pine, Oak

**Glass:** Can be fitted with 24 mm double glazing or 32 mm triple glazing

### Window Opening Type

Specifications for Coplanar Windows: Various geometric shapes, including arched or straight designs. Standard opening window, 'gueule de loup' interlocking closure system and surface-mounted cremone handle for double windows.

**These windows are commonly used in certain areas of France, such as Paris, Bordeaux, and Lyon, for historic buildings. The sash and frame are aligned in the same plane to integrate seamlessly into a specific architectural style.**





## Profile

**Historic Profile 1: 68 mm thickness x 64 mm width x 78 mm (frame)**

**Historic Profile 2: 78 mm thickness x 64 mm width x 78 mm (frame)**

**Thermal Value**  $U_w$  1.27W/m<sup>2</sup>K (double-glazed glass  $U_g$  1.00)

**Gasket** EPDM gaskets, standard colors: white, beige, brown, wenge, gray, black

**Hardware** Visible or concealed, supporting up to 80 kg, AGB

**Rain Protection Profiles** Classic wooden drip edge, applied on the exterior of the sash

## Available Wood Types

Spruce, Meranti, Nordic Pine, Oak

**Glass** Can be fitted with 24 mm double glazing or 32 mm triple glazing

**For the 78 mm profile:** glass thickness between 34 mm and 42 mm

## Window Opening Type

Various geometric shapes: arched or straight  
Standard opening and tilt window

**These windows are widely used in Germany for historic buildings with a specific architectural style. The sash is not equal in size to the frame, maintaining the traditional design.**





## **Profile 58 mm thickness x 68 mm width**

**Thermal Value**  $U_w 1.27W/m^2K$  (double-glazed glass  $U_g 1.00$ )

**Gasket** EPDM gaskets, standard colors: white, beige, brown, wenge, gray, black

**Hardwar** Visible or concealed, supporting up to 80 kg, AGB

## **Rain Protection Profiles**

Classic wooden drip edge, applied on the exterior of the sash

## **Available Wood Types**

Spruce, Meranti, Nordic Pine, Oak

## **Glass**

Can be fitted with single glass (8 mm) up to double-glazed units (14 mm)

## **Window Opening Type**

Various geometric shapes: arched or straight  
Standard opening and tilt window

**These windows are widely used in Israel for historic buildings, playing a key role in restoration and rehabilitation projects, preserving the architectural style.**



**Profile 42 mm thickness x 72 mm width (sash) x 80 mm (frame)**

**Thermal Value Uw 1.27W/m<sup>2</sup>K (double-glazed glass Ug 1.00)**

**Gasket** EPDM gaskets, standard colors: white, beige, brown, wenge, gray, black

**Hardware** Visible or concealed, supporting up to 80 kg

#### **Rain Protection Profiles**

Classic wooden drip edge, applied on the exterior of the sash

**Available Wood Types** Spruce, Meranti, Nordic Pine, Oak

**Glass** Can be fitted with single glass or double-glazed units up to 20 mm

#### **Window Opening Type**

Various geometric shapes: arched or straight  
Standard double-sash window, only with regular opening and tilt function

#### **Historic Buildings and Restorations**

These windows are used in the restoration of old buildings, where it is necessary to preserve the original architectural appearance.

#### **Traditional Buildings in Eastern Europe and the Balkans**

They are used in houses with Romanian, Bulgarian, Serbian influences, where simple hardware and casement opening are preferred.





**Profile** 80 mm thickness

**Thermal Value**  $U_w$  0.85 W/m<sup>2</sup>K (triple glazing  $U_g$  0.5)

**Gasket** EPDM gaskets, standard colors: white, beige, brown, wenge, gray, black

**Hardware** Visible or hidden, supporting up to 150 kg

#### **Rain Protection Profiles**

On wooden frame and sash as standard equipment, available in different colors

**Available Wood Types** Meranti, Nordic Pine, Oak

**Glass** 36 mm thick glass package

**Window Opening System** Exterior opening

#### **Destination of Use**

Used in the Nordic countries of Europe, Scandinavia, and northern Germany. Outward-opening windows in houses with thatched roofs in the Nordic countries have practical and traditional advantages that align with the climatic conditions and the specific architectural style of the region.

In the Nordic countries, strong winds are common, and opening the windows outward can help reduce the pressure exerted by the wind on the windows, making them safer and more durable.



## Wood-Aluminum Windows GUTMANN CORA



The GUTMANN CORA system can be designed as a double flap, single flap or angular flap.

The CORA wood-aluminum system is based on the basic construction for standard wooden windows "IV 68" with a wood thickness of 68 mm per sash and frame. Therefore, no investment is required in special milling tools for the production of the wooden frame.

The bottle is completely taken in the wooden box. Therefore, the insulating glass edge is excellently insulated against unwanted heat loss. The glass is exchanged from the inside by loosening the glass strip.

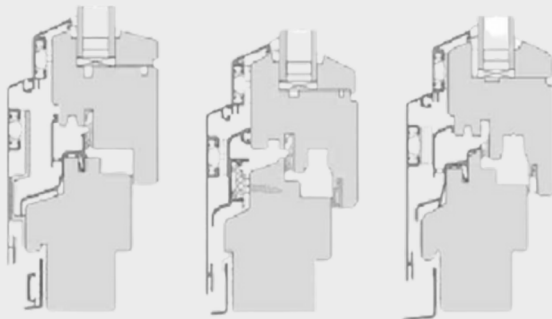
Aluminum housing is a weather protection and an architectural element that can be freely designed in terms of color. The wooden frame ensures stability, excellent thermal insulation and gives the house a pleasant, familiar character.

The aluminum frames are ventilated from the back and are attached to the wood with stable supports without tension: This allows the wood to breathe and the aluminum frame can expand without obstacles in case of temperature fluctuations.

The widths of the coordinated profile allow the continuous edges of the outer frame for perfect connections with the wall and plaster.

With variable profiles, couplings and assembly-friendly production segments, economical constructions are easy to implement.

System Properties / Thermal Insulation: All the properties of the wooden window system used are preserved by the aluminum cladding.



# Wood-Aluminum Windows GUTMANN MIRA TWT



## New Window System

The new window system has a wood profile width of only 68 mm. The visible face width is 110 mm with a double rebate.

Our unique innovation: The fabricator can manufacture a complete window using a 68 mm x 68 mm wood section. Frames, sashes, transoms, or mullions – all components can be made in 68 mm. All common window opening types and constructions are possible.

## System Description

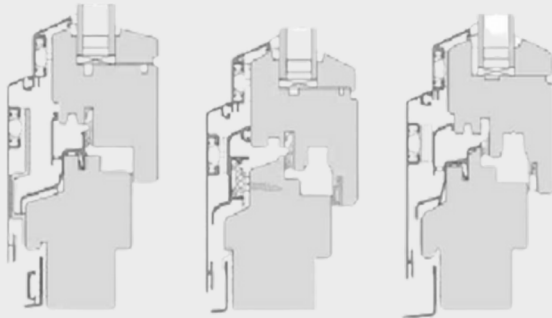
- Complete wood width of only 68 mm
- Visible face width of only 110 mm with double rebate
- All components – frames, sashes, transoms, or mullions – can be manufactured in 68 mm
- Compatible with all standard window sizes and opening types
- Optimized profile geometry reduces additional costs
- Clip holder replaces the previously used twist holder

**Available Wood Types:** Meranti, Pine, Oak

**Wood Thickness Options:** 68 mm, 78 mm, 90 mm

**Ug Value:** 0.6 W/m<sup>2</sup>K

**Glass Spacer:** Thermix TX.N plus



# Laminated Interior Wood Doors

## Door type

Laminated Wood Door

## Door frame

Laminated wood elements, thickness 42 mm, width depending on the wall gap or customer option

## Door panel

Laminated wood elements, panel thickness 21 mm, made in classic style

## Hardware

3D hinge diameter of 16 mm, selectable locks and handles.  
There is the possibility to equip with Mandelli, Hoppe or Tolosa handles

## Gasket Rubber

## Surface coating

Water-based coating (3 coatings of paint) according to the tone chart  
or RAL palette 2 coats of protective varnish and UV protection

## Dimensions

Depending on the size of the opening system, maximum 220 cm height per door leaf

## Jamb

Simple, inserted into the wall gap  
Simple, with a fixed ledge on one side  
Adjustable, depending on the thickness of the wall, with ledges on both sides and lining  
Adjustable, depending on the thickness of the wall, with the coffered lining.  
For the coffered lining, the wall thickness must be at least 25 cm

## Wood essences

Spruce, Pine, Oak, Meranti

# Exterior Laminated Wood Doors



Exterior door Section  
with Wood Sil



Exterior door Section  
with Aluminium Sill



## Door frame

Laminated wood elements, thickness 68 mm, width depending on the wall gap or customer option

## Panel or boards

Laminated wood elements, thickness starting from 42 mm. Between the two 42 mm laminated wood boards is pressed thermal insulation material

## Hardware

Hinges Simonswerk BAKA 150 - 300 kg, secure multi-point lock, handles HOPPE, TOLOSA, MANDELLI

## Hinges Elephant

Gasket

Two rows of rubber gasket

## Surface coating

Water-based coating (3-coatings of paint) according to the tone chart or RAL palette, 2 coats of exterior protective varnish and UV protection

## Dimensions

Depending on the size of the opening system, maximum 220 cm height per door leaf. Mounting of top panels, side skylight, transom opening system or double opening system

## Jamb

Simple, inserted into the wall gap

Thin aluminum door sill or wood sill, similar color

## Wood essences

They can be made from Spruce, Pine, Oak, Meranti essences

# Laminated Wood Shutters

## Technical details



### Type

**Shutters with fixed slats**  
**Shutters with movable slats**

**Frame size** 70 x 32

Shutters with fixed slats

**Slat size** 70 x 15

Shutters with movable slats

**Slat size** 40 x 8

**Hardware** Maco, RUSTICO, SOLIDO

### Typology Turning

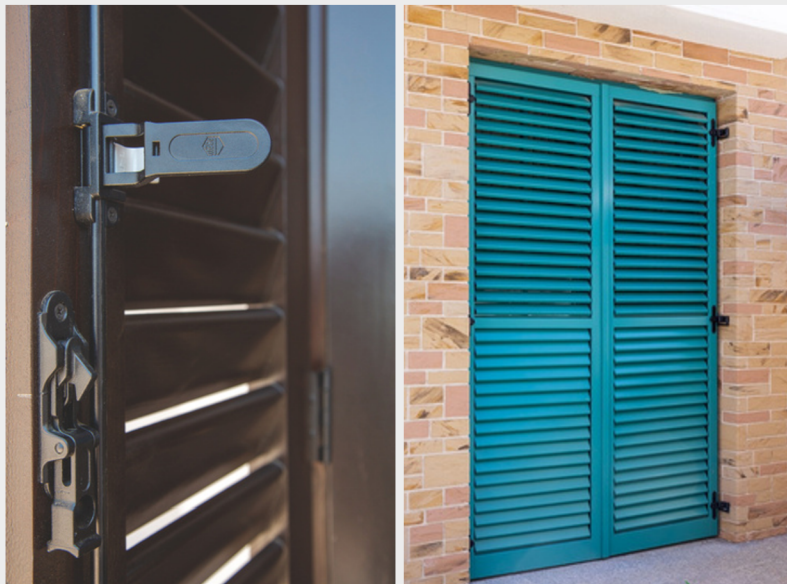
- (Hinged) – Simple opening system, the shutter folds against the wall.
- Folding – Folding opening system, ideal for spaces where a classic opening is not possible.
- Sliding – Opening system through sliding.

**Mounting** On the window frame, in the hollow of the wall, on its own jamb

**Essences** Meranti and Spruce

**Colors and finish** Stain standard version or RAL color

**The shutters are used both as an integrated part of European architecture, providing a special aesthetic aspect, but also for various functions such as light control, wind protection, adverse weather conditions protection and to maintain privacy.**



See part of our portofolio  
from France, Germany, Italy,  
but also Ibiza or  
Switzerland.



Delivering In Paris, France



Presentation sample Ibiza

**The most important LUCA project is your project**

Get to know us as we are, without edits, directly from the factory, during production, or from the construction site during the installation of the carpentry. See how we create custom-made, each project of laminated wood carpentry, and the relationship we have with our clients!

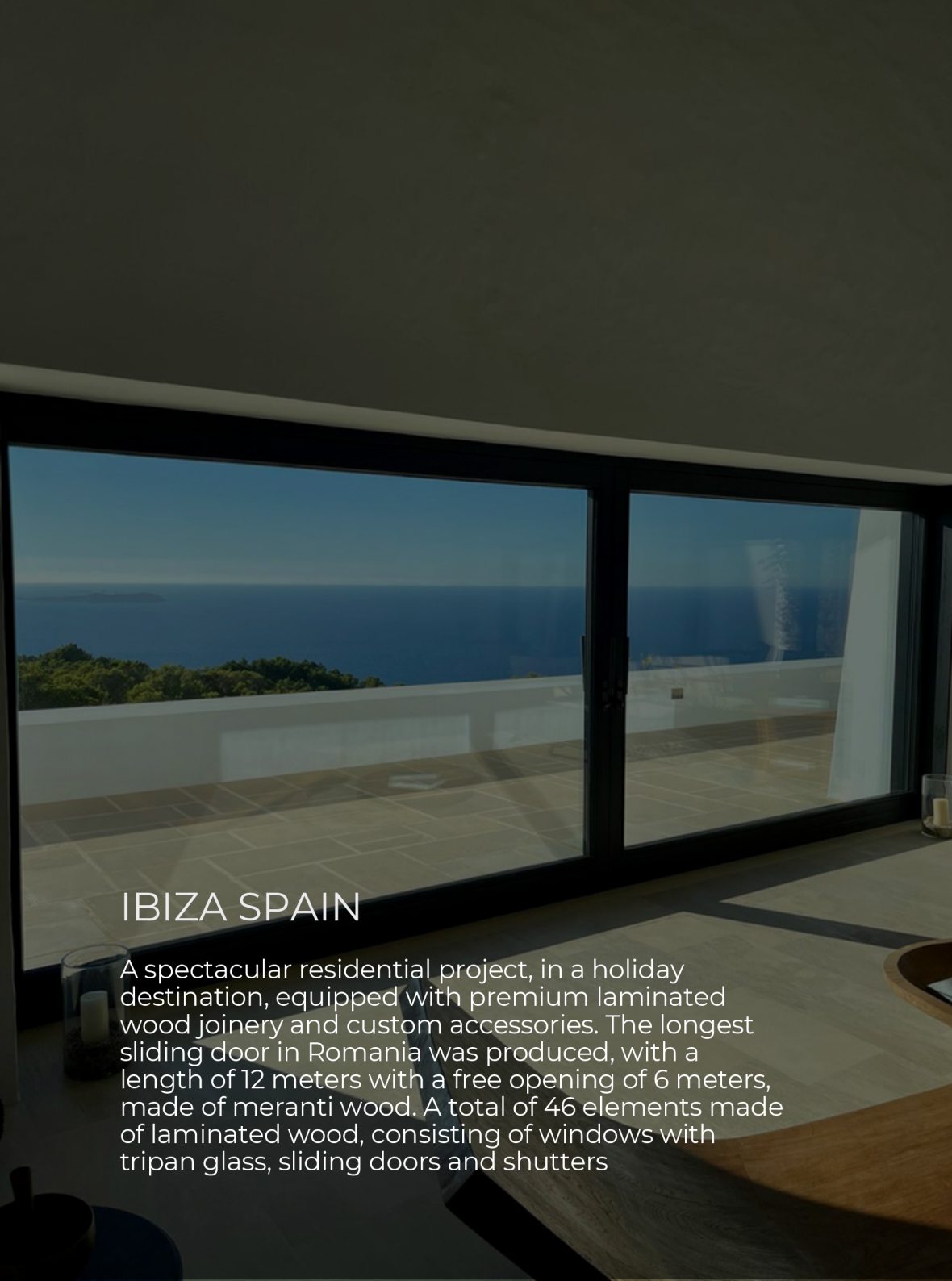
  Connect with us and check latest projects on social media and website



Preparation for delivery in Morainvilliers, France



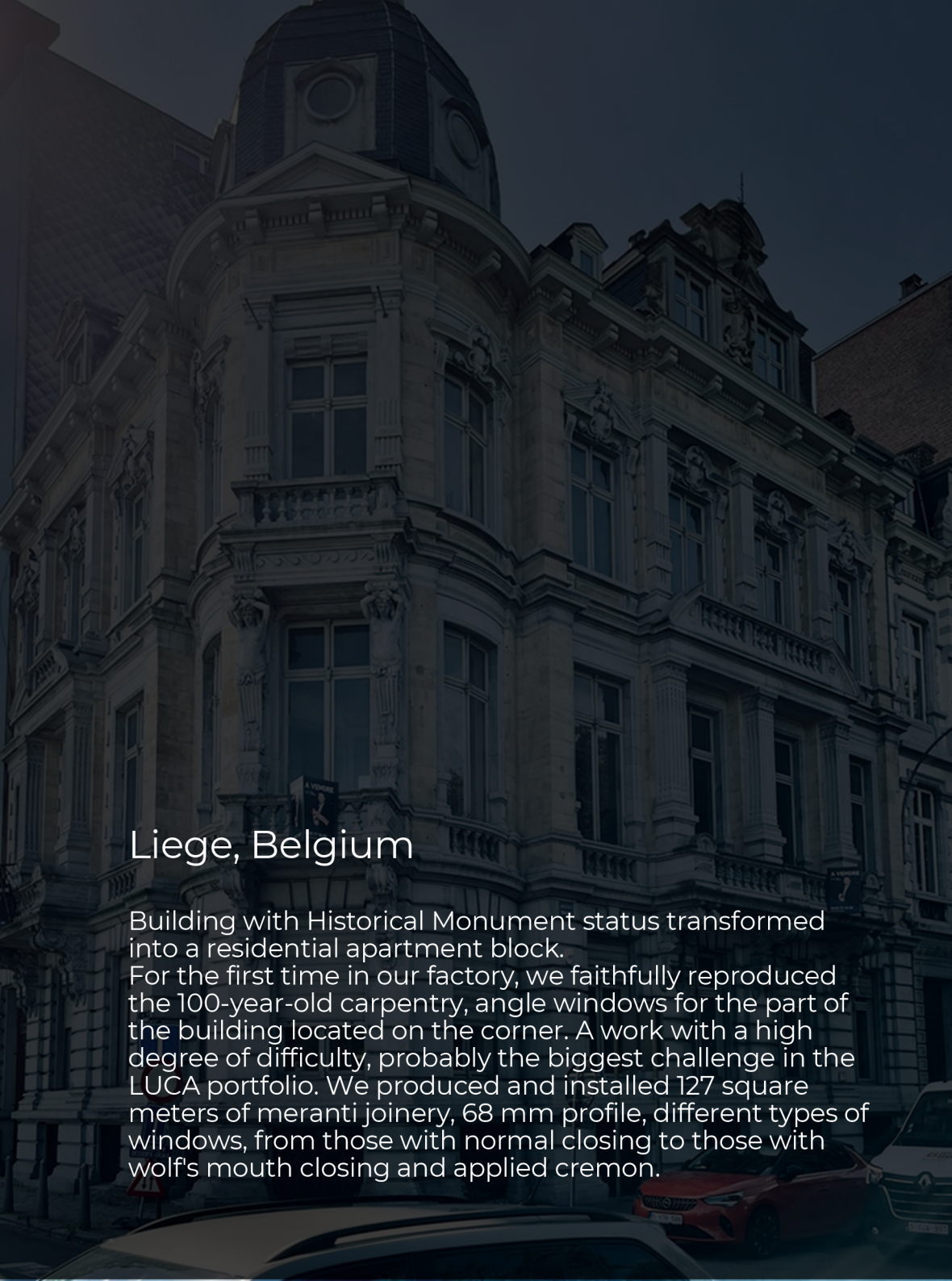
Site visit for measurements at a castle in Riofreddo, Italy



## IBIZA SPAIN

A spectacular residential project, in a holiday destination, equipped with premium laminated wood joinery and custom accessories. The longest sliding door in Romania was produced, with a length of 12 meters with a free opening of 6 meters, made of meranti wood. A total of 46 elements made of laminated wood, consisting of windows with tripan glass, sliding doors and shutters



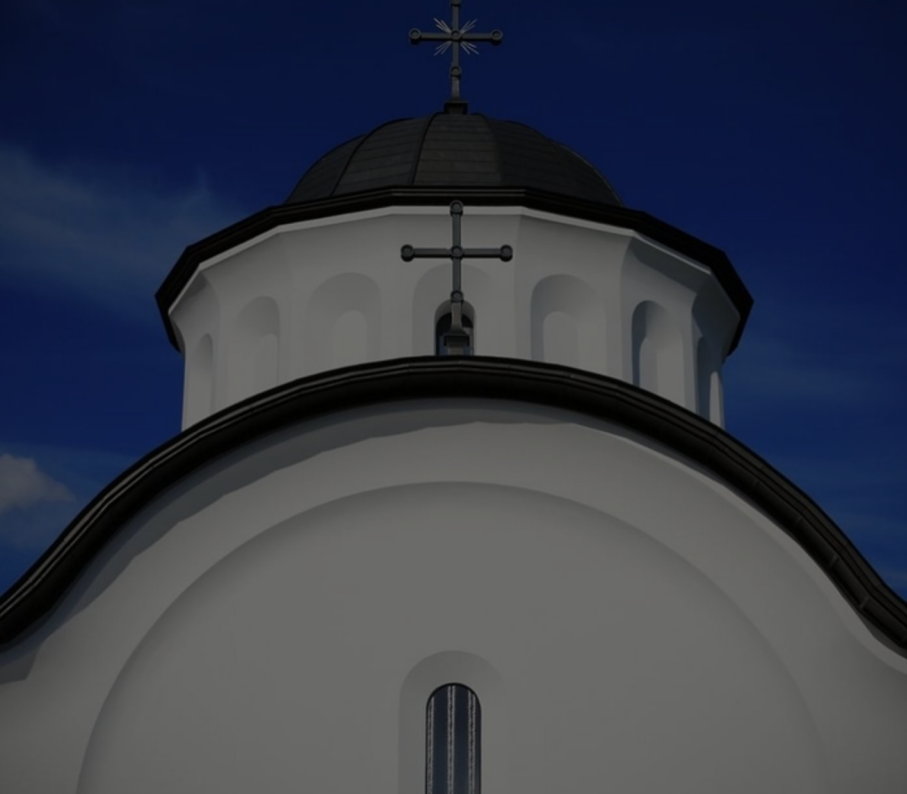


## Liege, Belgium

Building with Historical Monument status transformed into a residential apartment block. For the first time in our factory, we faithfully reproduced the 100-year-old carpentry, angle windows for the part of the building located on the corner. A work with a high degree of difficulty, probably the biggest challenge in the LUCA portfolio. We produced and installed 127 square meters of meranti joinery, 68 mm profile, different types of windows, from those with normal closing to those with wolf's mouth closing and applied cremon.







## Orthodox Christian Settlement (CBROM), Munich, Germany

One of our project in Europe, was completed after approximately 680 days spent on the site of the Orthodox Christian Settlement in Munich - CBROM - where no less than 1000 square meters of carpentry and solid wood furniture were delivered in 2020. The joinery was executed in oak stock, on a 68 mm profile for the windows, facing and batten battens and internal linings were also used. A large-scale project, probably the most important in the LUCA portfolio.



Bespoke joinery manufacturing

The power of a brand vision comes to life at the intersection of the discipline of a daily mission and an unwavering commitment to progress. LUCA is the expression of this transformation – a creation of its own, materialized through passion, determination, and excellence. Today, LUCA is not just a name in the market but the leader redefining the standards of wooden joinery.

[www.lucawood.ro](http://www.lucawood.ro)